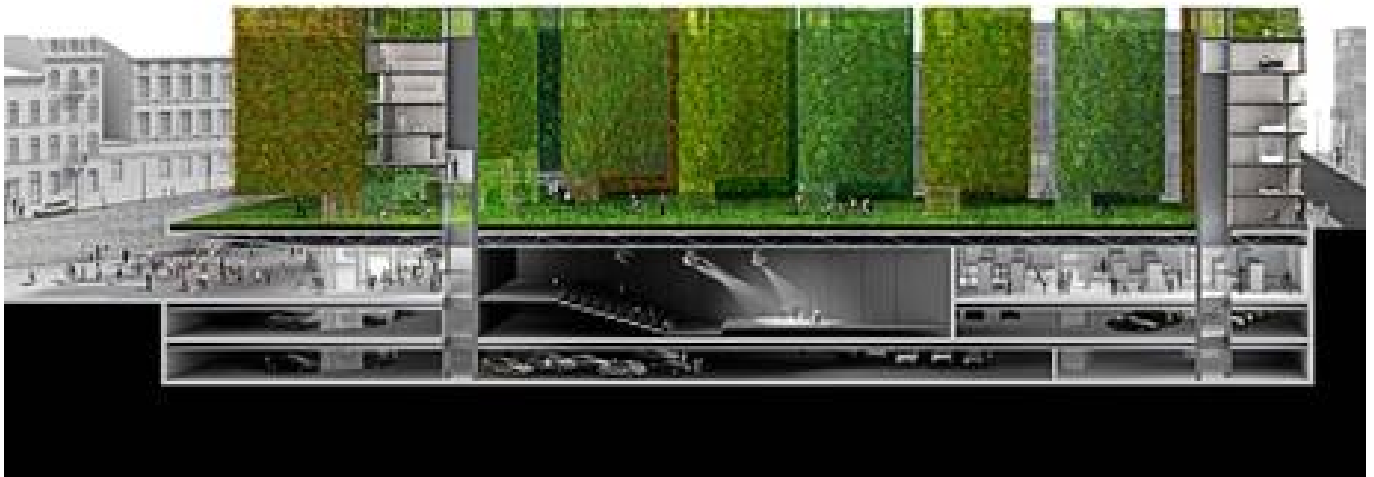


# BASIS

Biuro Architektoniczne Sirojć i Szkółka

A: Wolbromska 7, 53-148 Wrocław  
T. +48 71 723 23 22, T. +48 71 710 96 90  
F. +48 71 723 23 18

## ImPLANT - The Grand City Triangle



**Year:** 2005

**Localization:** Belgium

**Size:** 15000 m<sup>2</sup>

**Status:** Competition

**Team:** Dariusz Sirojć

**Awards:** Infrastructure Department Award Nomination